



CLASSIC Oil 250 8 Z

Functions

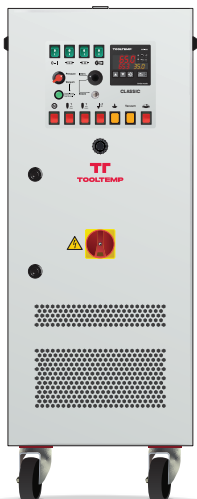
- Self-optimising temperature controller with temperature display in 1/10°C increments
- Display in °C or °F and l/min or gal/min
- Digital flow display and monitoring
- Automatic temperature monitoring
- Switch for temperature control on the tool
- Heaters switchable in stages
- pressure gauge
- Automatic mould draining
- leak stopper device

Construction

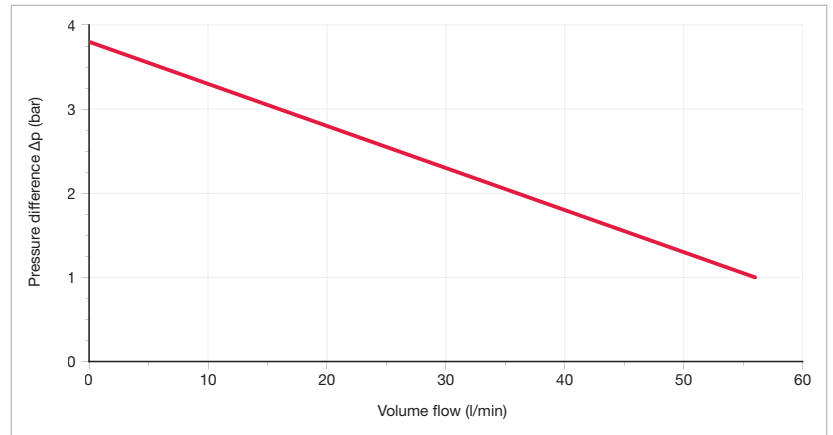
- High-temperature pump with mechanical seal
- Hot oil circuit with bypass, which ensures internal oil circulation when valves are closed
- Limescale-free heat exchanger
- No oil cracking thanks to special heating construction
- Expansion vessel with drip pan
- Device on castors

Safety features

- Level control as dry-running protection
- Electronic temperature limitation and monitoring in the controller
- Mechanical safety thermostats
- Visual and acoustic error indications
- Integrated circuit breakers
- Main switch, transformer and motor protection switch

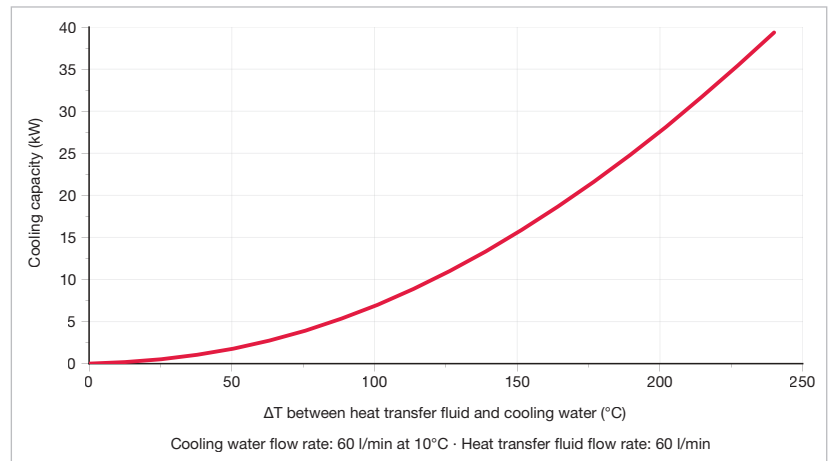


Pump performance

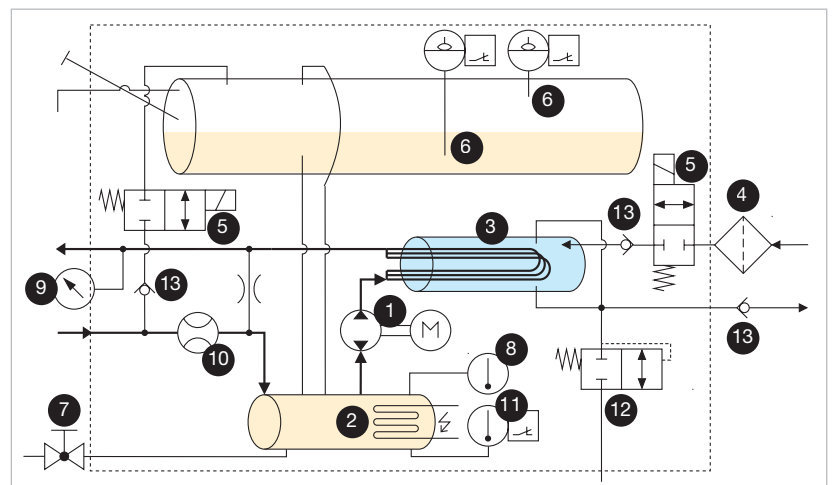


Performance data with heat transfer oil Tool-Therm SH3 at 200°C

Cooling capacity

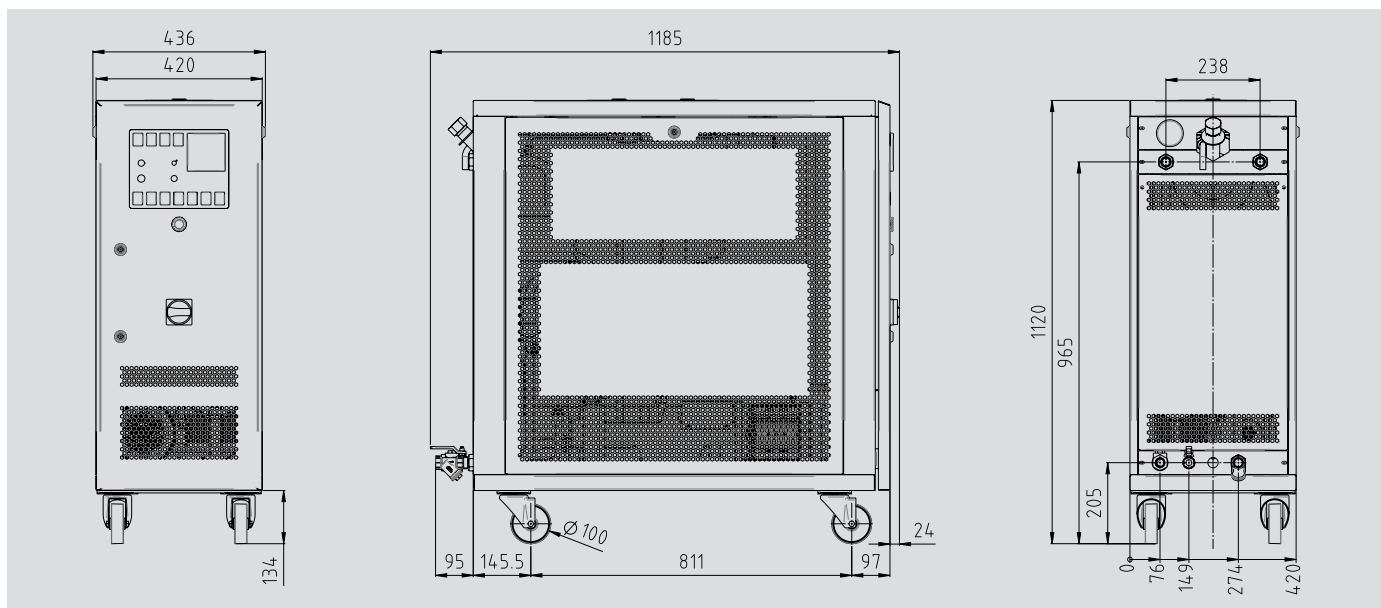


Fluidic diagram



1 pump with reversible pumping direction, 2 heating element, 3 cooling coil, 4 filter, 5 2-2 way valve (normally closed), 6 level sensors, 7 ball valve, 8 temperature sensor, 9 pressure gauge, 10 flow sensor, 11 safety temperature limiter, 12 pressure-relief valve, 13 check valve

Technical data



	Oil
Maximum temperature	250 °C
Heat output	8 kW (3/5 kW)
Cooling capacity	See diagram
Filling volume (heat transfer fluid)	Min. 9 litres
Expansion volume	17 litres
Pump	Type Z
Motor rated power	1.5 kW
Standard operation	See diagram
Leak Stop mode	Vacuum max. 8 mH ₂ O
Control system	MP-888
Temperature measurement	Temperature sensor FeKo type J
Pump-pressure measurement	Pressure gauge
Flow measurement (heat transfer fluid)	Impeller wheel sensor with inductive pick-up
Connections	
Heat transfer fluid (feed and return)	3/4" BSPP (G3/4) female thread
Cooling water inlet	3/4" BSPP (G3/4) female thread, with water filter
Cooling water outlet	3/4" BSPP (G3/4) female thread
Empty weight	139 kg
Colour	RAL 7035 light grey
Surroundings	
Temperature range	5-40 °C
Relative humidity	40-80% RH (non-condensing, no ice formation)
Installation	Inside, ventilation openings must be at least 10 cm clear
Continuous sound pressure level	< 70 dB(A)
Power supply	380-415 V, 50 Hz/440-480 V, 60 Hz/380 V, 60 Hz/200-230 V, 50 Hz/200-240 V, 60 Hz
Connected load	9.6 kW
Conductor cross-section of connection cable	
200-240 V	10 mm ²
380-480 V	4 mm ²
Protection class device	IP44
Labeling	CE