



MATIC Oil

360 2x36 A

360 2x36 Z

Functions

- IRIS control system
- Pt100 temperature sensor in feed and return lines
- Heater control by solid-state relays
- Variable-speed pump with automatic eco-mode
- Mould drainage
- Leakstop operating mode

Construction

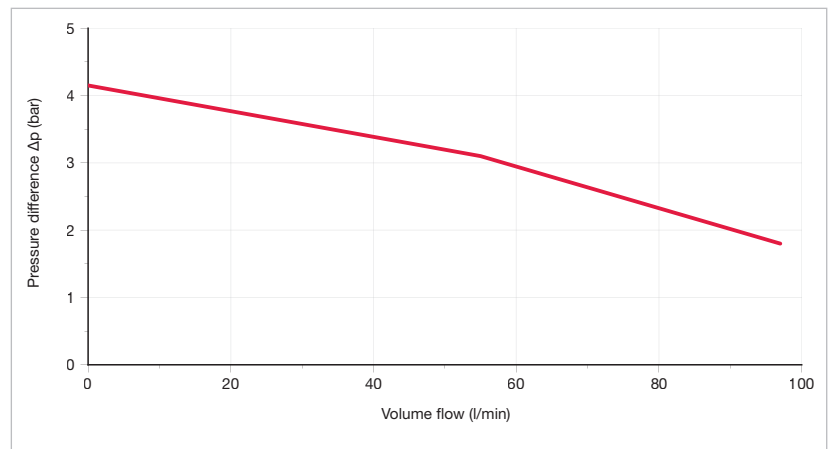
- Triple bearing high temperature pump, developed and manufactured by Tool-Temp
- Inverter, limescale-free shell & tube heat exchanger
- Fully immersed heaters made of high-temperature corrosion-free Nickel alloy (Incoloy 800)
- Maintenance-free flow meter
- Stainless-steel solid piping

Safety features

- Multiple redundant, mechanical temperature limiter
- Pump motor monitored by the variable frequency drive
- Configurable safeguard limits and corresponding reactions
- Configurable audible alarm

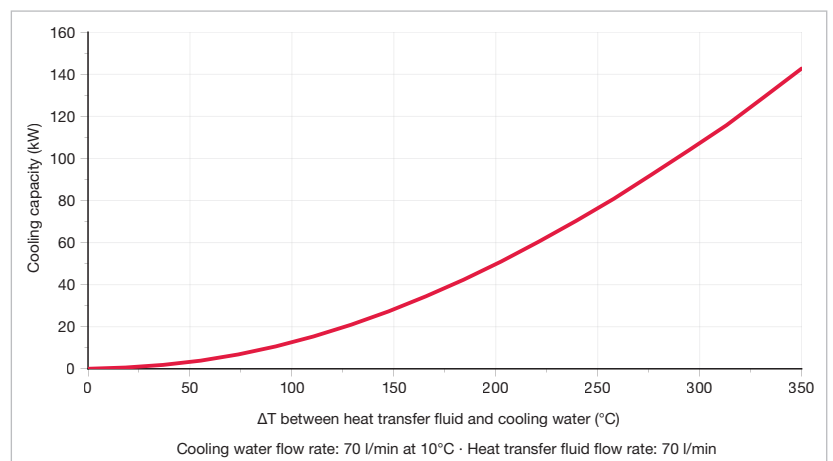


Pump performance

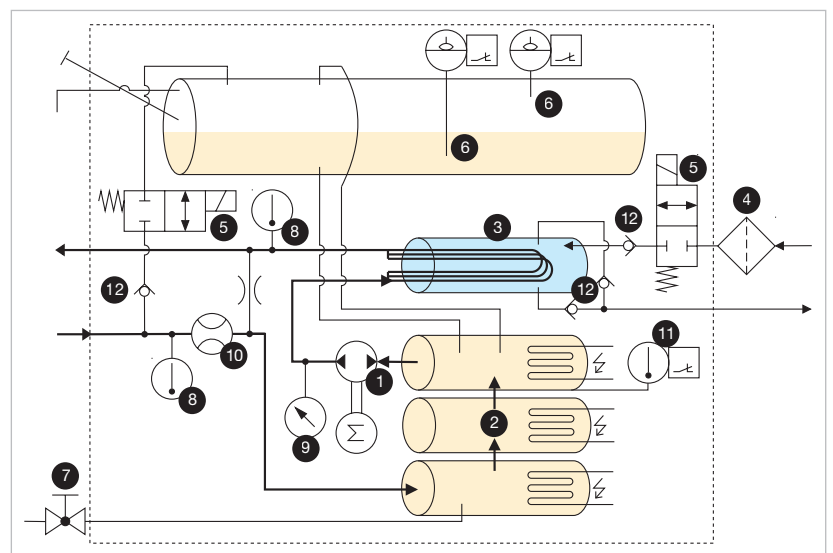


Performance data with heat transfer oil Tool-Therm SH3 at 200 °C

Cooling capacity

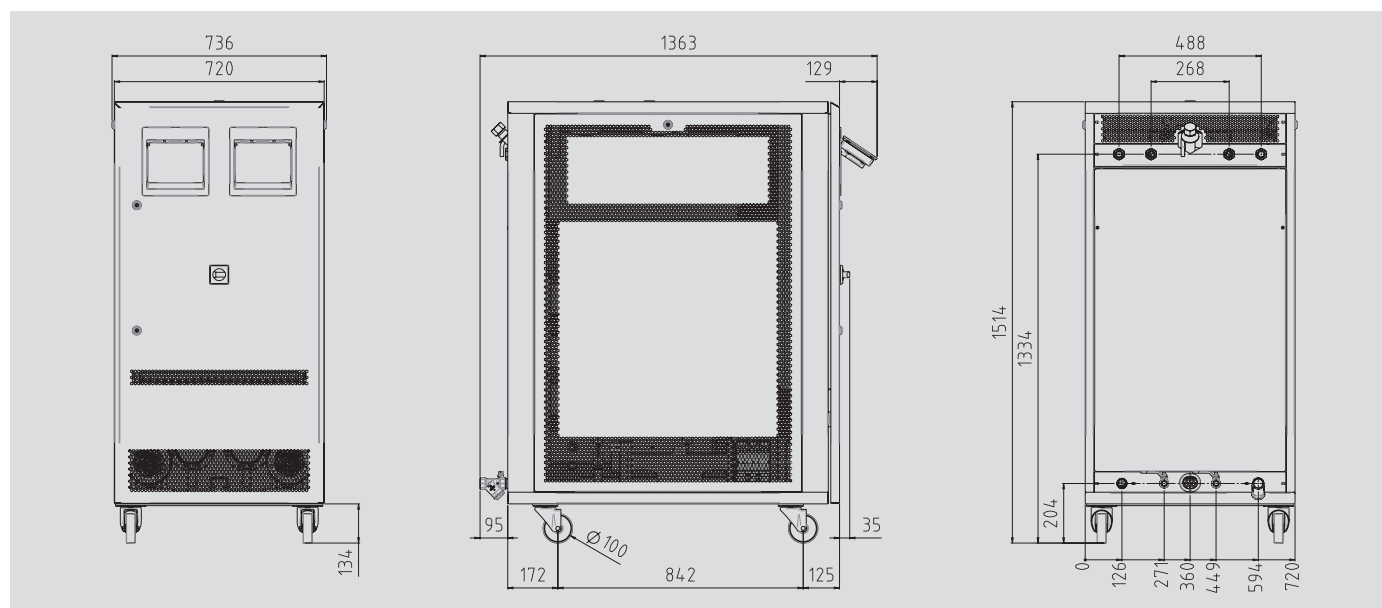


Fluidic diagram



1 pump with reversible pumping direction, 2 heating element, 3 cooling coil, 4 filter, 5 2-2 way valve (normally closed), 6 level sensors, 7 ball valve, 8 temperature sensor, 9 pressure sensor, 10 flow sensor, 11 safety temperature limiter, 12 check valve

Technical data



	Oil
Maximum temperature	360 °C
Heat output	2 x 36 kW (3 x 12 kW)
Cooling capacity	See diagram
Filling volume (heat transfer fluid)	Min. 42 litres
Expansion volume	36 litres
Pump	Type A or Z
Pressure and flow rate	See diagram
Motor rated power	1.5 kW
Control system	IRIS
Temperature measurement	3-wire Pt100 (F0.15 according to IEC 60751), feed and return
Pump-pressure measurement	Piezoresistive pressure transmitter
Flow measurement (heat transfer fluid)	Impeller wheel sensor with inductive pick-up
Languages	EN, DE, FR, IT, ES, NL, CZ, PT, HU, PL, SV, HBS, JA, TR, ZH, RO (expandable)
Interfaces	IO1: RS232, RS485, CL 20 mA, CAN (accessory)
OPC-UA (standard)	IO2: Profibus, Profinet, EtherNet/IP (accessory)
	IO3: 0-10 V, 0/4-20 mA, external measurement (accessory)
Connections	
Heat transfer fluid (feed and return)	¾" BSPP (G¾) female thread
Cooling water inlet	1" BSPP (G1) female thread, with water filter
Cooling water outlet	1" BSPT (R1) female thread
Empty weight	373 kg
Colour	RAL 7035 light grey
Surroundings	
Temperature range	5-40 °C
Relative humidity	40-80% RH (non-condensing, no ice formation)
Installation	Inside, ventilation openings must be at least 10 cm clear
Continuous sound pressure level	< 70 dB(A)
Power supply	380-480 V, 50/60 Hz
Connected load	75.2 kW
Conductor cross-section of connection cable	
200-240 V	-
380-480 V	70 mm ² (not included)
Protection class device	IP44, IP54 optional
Labeling	CE, UL-ready