



MATIC Water

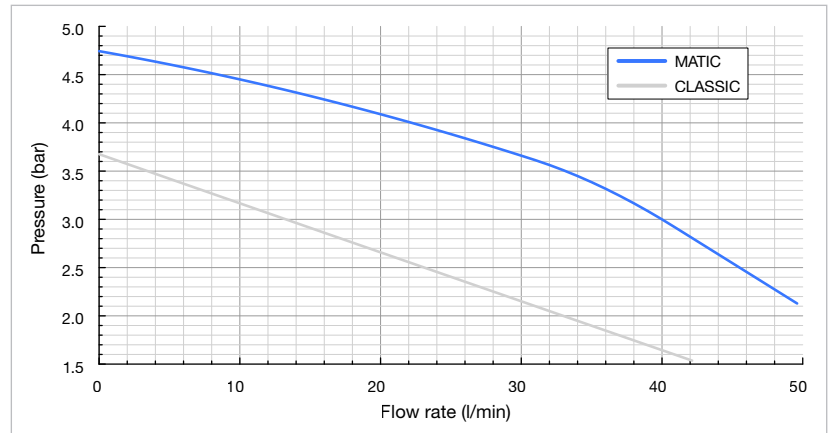
160 12 B

160 24 B

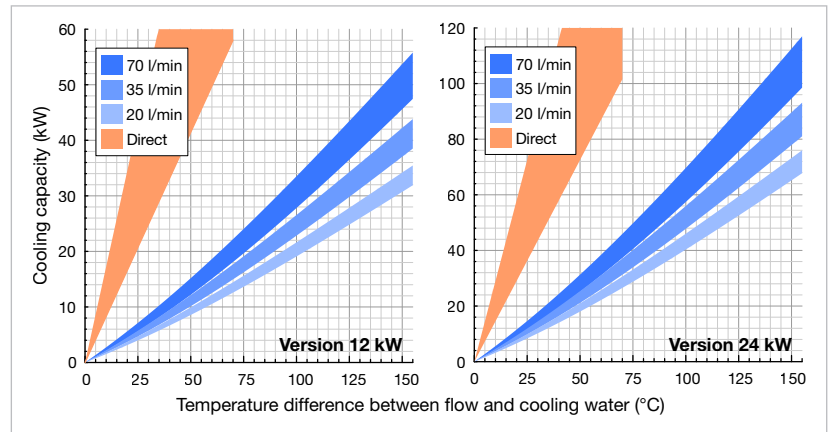
- Energy-efficient and ecological
- Modular and easy to expand
- Predefined actions
- Configurable recipes
- Intelligent connectivity
- Predictive maintenance



Pump characteristic curve

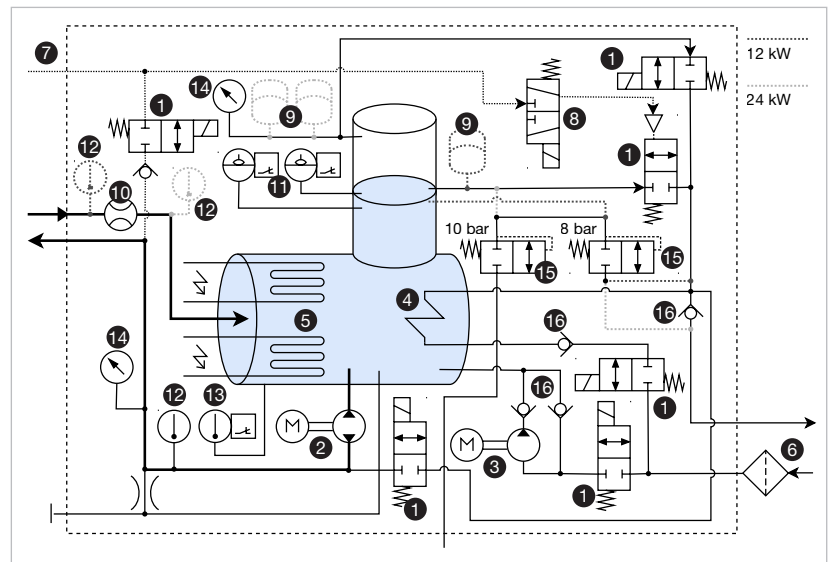


Cooling capacity



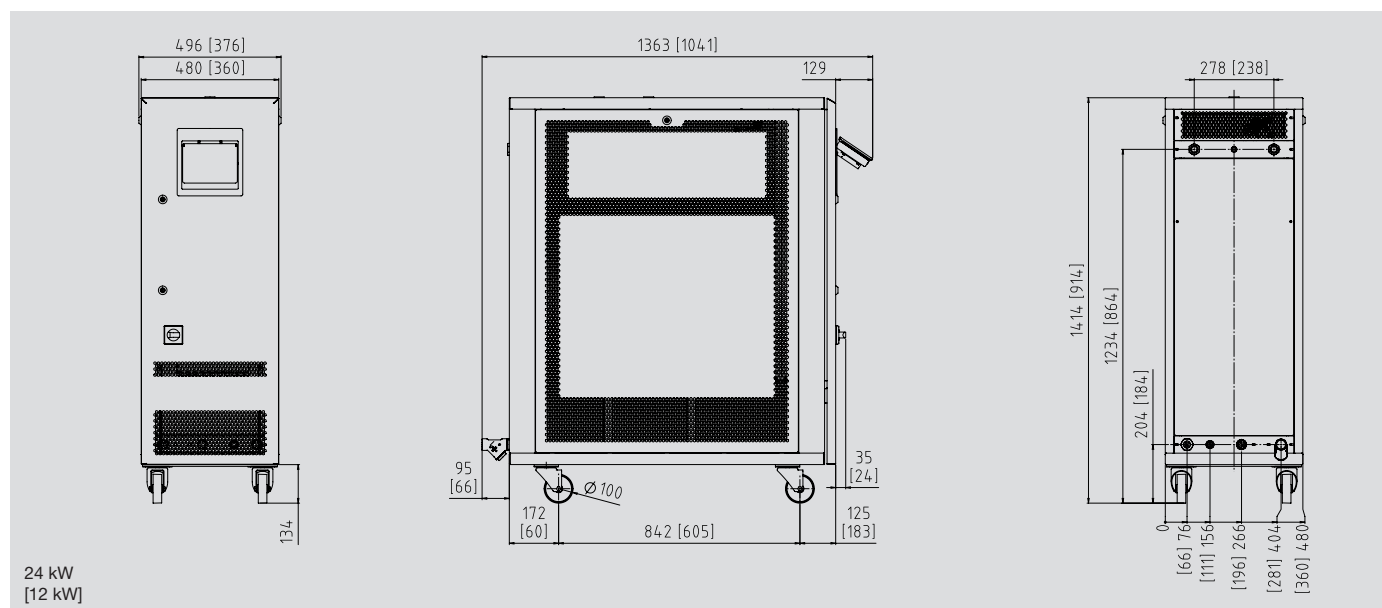
Power specifications 12 kW at min. 12 l/min @ 2 bar; at max. 25 l/min @ 8 bar cooling water
 Power specifications 24 kW at min. 21 l/min @ 2 bar; at max. 42 l/min @ 8 bar cooling water

Fluidic diagram



1 2-2 way valve (normally closed), 2 Circulation pump with reversible pump direction, 3 Booster pump, 4 Cooling coil, 5 Heating element, 6 Filter, 7 Compressed air feed, 8 Pilot valve for pneumatic 2-2 way valve, 9 Expansion vessel, 10 Flow sensor, 11 Level sensors, 12 Temperature sensor, 13 Safety temperature limiter, 14 Pressure sensor, 15 Pressure relief valve, 16 Non-return valve

Technical data



24 kW
[12 kW]

	MATIC Water 160 12 B	MATIC Water 160 24 B
Maximum temperature	160 °C	
Heat output	12 kW	24 kW
Cooling capacity	See diagram	
Pump	Type B	
Pressure and flow rate	See diagram	
Rated power of the motor	1.5 kW	
Control system	IRIS	
Temperature measurement	3-wire Pt100 (F0.15 to IEC 60751), flow and return	
Pump pressure measurement	Piezoresistive pressure transmitter	
Flow measurement (heat transfer medium)	Vane wheel sensor with inductive pick-up	
Languages	DE, EN, ES, FR, IT, NL (expandable)	
Interfaces	Module IO1: RS232, RS485, CL 20 mA, CAN (accessories)	
OPC-UA (Standard)	Module IO2: Profibus, Profinet, EtherNet/IP (accessories)	
	Module IO3: 0-10 V, 0/4-20 mA, external measurement (accessories)	
Number of extension module slots	1	2
Connections		
Heat transfer medium (flow and return)	¾" BS internal thread	¾" BS internal thread
Cooling water, inlet	¾" BS internal thread, with water filter	1" BS external thread, with water filter
Cooling water, outlet	¾" BS internal thread	1" BS external thread
Compressed air	¼" BS internal thread	¼" BS internal thread
Emptying	¾" BS internal thread	½" BS internal thread
Empty weight	120 kg	180 kg
Color	RAL 7035 light gray	
Surroundings		
Temperature range	5-40 °C	
Relative humidity	40-80 % RH (non-condensing, no ice formation)	
Installation	Inside, ventilation openings must be at least 10 cm clear	
Continuous sound pressure level	< 70 dB (A)	
Power supply	380-480 V, 50/60 Hz or alternatively 200-240 V, 50/60 Hz	
	12 kW version	24 kW version
Connected load	14.3 kW	26.3 kW
Conductor cross-section of connection cable		
200-240 V	10 mm ²	25 mm ²
380-480 V	6 mm ²	16 mm ²
Protection class device	IP44, IP54 optional	
Labeling	CE, UL-ready	